

Package Contents:

GN079 – Multi-Surface Sticky Suction Mounting Pedestal
 AP013 – Adhesive Mounting Disk



*If the sticky suction base becomes dirty or loses stickiness, rinse under warm water with mild liquid soap and let air dry.

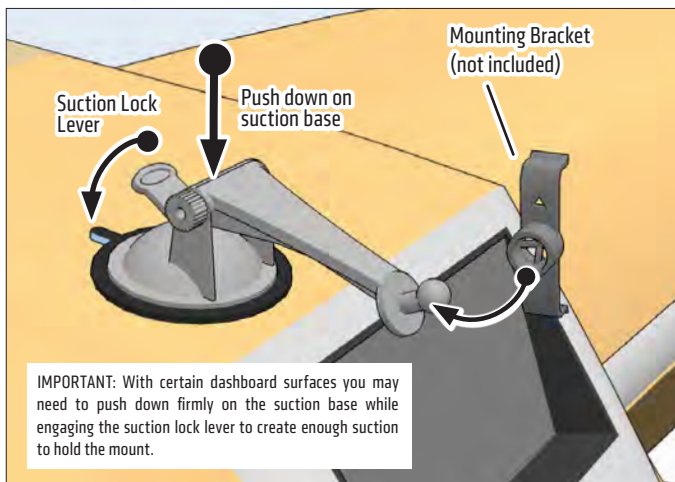
Compatible with Garmin® devices:

Garmin® nüvi® - nüvi 24x5, 25x5, 2013, and 2014 Essential Series, models 30, 40, 200, 200w, 205, 205w, 250, 250w, 255, 255w, 260, 260w, 265T, 265W, 265WT, 270, 275T, 285WT, 295W, 350, 360, 360T, 370, 465T, 465LMT, 500, 550, 600, 610, 650, 660, 670, 680, 750, 755T, 760, 765T, 770, 775T, 780, 785T, 850, 855, 880, 885T, 1100, 1100LM, 1200, 1250, 1260T, 1300, 1350, 1350T, 1370T, 1390T, 1450, 1490T, 1690, 1350LMT, 1390LMT, 1450LM, 1450LMT, 1450T, 1490LMT, 2200, 2250, 2250LT, 2300, 2300LM, 2350, 2350LMT, 2350LT, 2360LMT, 2360T, 2370LT, 2450, 2450LM, 2460LT, 3450, 3450LM, 3490LMT, 3555LM, 3590LMT, 3750, 3760T, 3760LMT, 3790T, 3790LMT, 5000

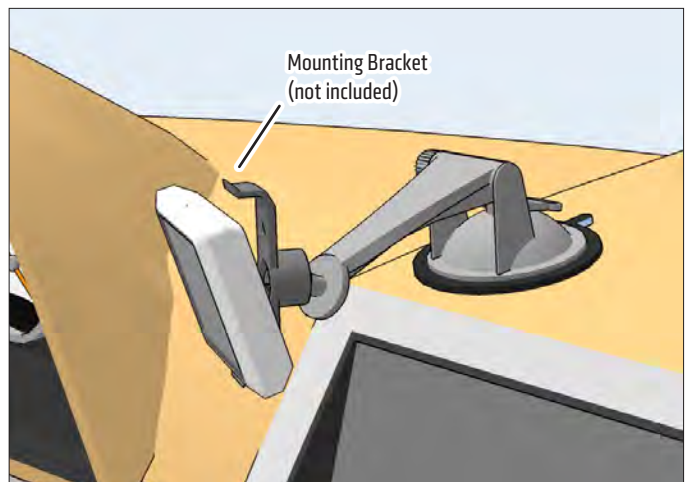
The Garmin brand name and nüvi product name are trademarks or registered trademarks of Garmin International.

DASHBOARD MOUNTING WARNING: THE STICKY SUCTION PEDESTAL SHOULD NOT BE USED ON SOME TYPES OF DASHBOARDS. IT MAY LEAVE A PERMANENT INDENTATION ON DASHBOARD SURFACES MADE OF SOFT VINYL, LEATHER, OR SIMILAR MATERIALS. TO PREVENT PERMANENT INDENTATION MARKS, USE THE INCLUDED ADHESIVE MOUNTING DISK WHEN MOUNTING ON SOFT DASHBOARD SURFACES.

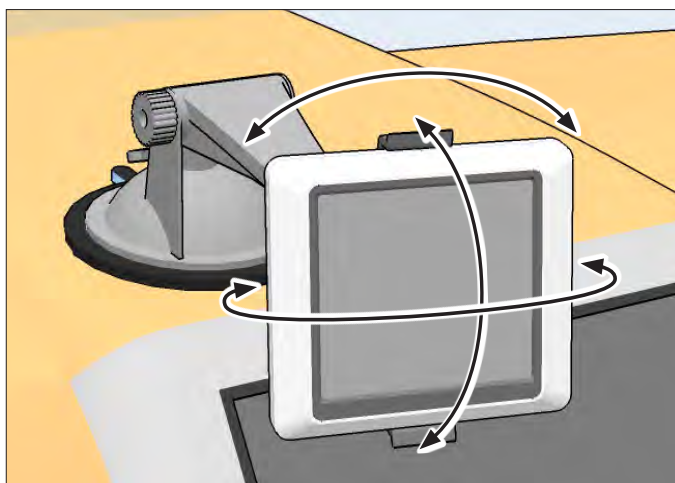
1 Attach pedestal to dash or windshield, engage suction lock. Connect mounting bracket (not included) to the pedestal.



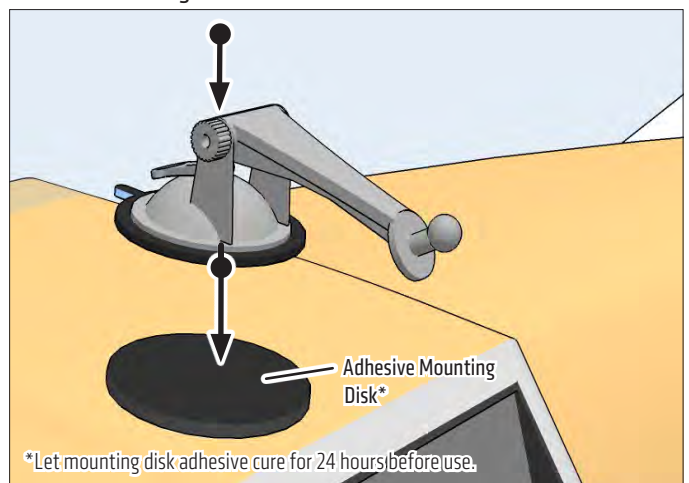
2 Insert Garmin nüvi into mounting bracket (not included).



3 Adjust position as desired.



OPTIONAL: For use on soft vinyl or leather dashboards, use included adhesive mounting disk*.



! Safety Precautions

Do not install Arkon products over an airbag cover or within the airbag deployment zone. Arkon Resources, Inc. assumes no responsibility of liability for injury or death as a result of car crashes and / or airbag deployment.

Arkon is not responsible for any damages caused to your vehicle, your device, or yourself due to the installation or use of this mount.

ARKON
RESOURCES INC.

The Mobile Mounting Specialists™

Consumer Hotline:

USA (800) 841-0884

INT'L (626) 254-9005

Monday - Friday 9 am - 5 pm, PST

www.arkon.com

Arcadia, CA 91006 USA

Designed in USA | Made in China

© Copyright 2014 Arkon Resources, Inc.