

TTSE128 | 1" Multi Angle Adhesive Dashboard or Console Mount for TomTom® Start™ & Ease™




CM048-2
1" Multi Angle
Dashboard
Mount

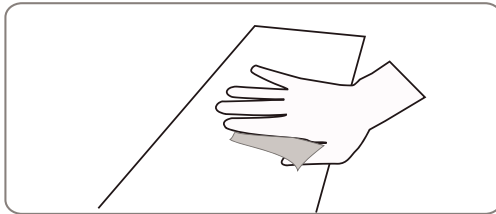
APTSE
Adapter Plate for
TomTom Start™ & Ease™

Package Contents:

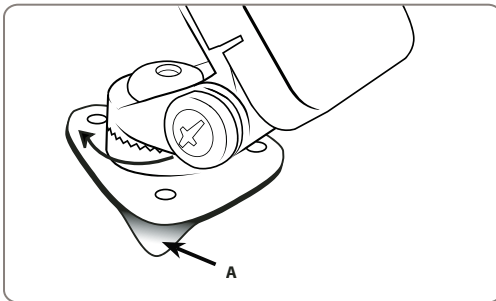
- (1) CM048-2 1" Multi Angle Dashboard or Console Mount
- (1) APTSE - Adapter plate for TomTom Start™ and Ease™
- (3) Self-tapping mounting screws

 Do not place mount in or near an air bag deployment zone or where it will obstruct view of the road.

Dashboard or Console adhesive mounting



Step 1. Find a safe location on the dashboard or console to mount the pedestal. Make sure the area is clean and dry. Use the included alcohol pad to clean the mounting surface.



- Step 2. Remove the adhesive backing (A) under the triangular pedestal and firmly press into place.
- Step 3. After adhesive has bonded at room temperature (approx. 72°F), allow 24 hrs prior to use for best results.
- Step 4. Adjust the angle of the mount head by firmly holding the base and rotating to the desired angle.

Dashboard or Console screw mounting installation (optional)

Safety Precautions

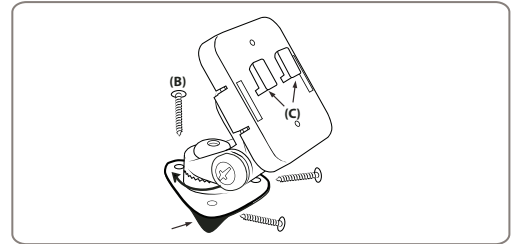
Drilling onto the dashboard, floor or console will permanently damage the vehicle. Use caution and consult a mobile install professional to avoid drilling into the gas tank, electrical system or other highly sensitive vehicle components.

Arkon Resources, Inc. is not responsible for any damages caused to your car or yourself due to the install of the pedestal mount.

Safety Precautions

Do not install Arkon products over an air bag cover or within the air bag deployment zone. Arkon Resources, Inc. assumes no responsibility of liability for injury or death as a result of car crashes and/or air bag deployment.

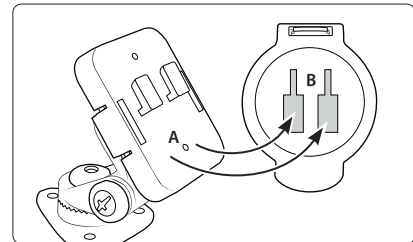
Arkon is not responsible for any damages caused to your car, your device, or yourself due to the installation or use of this pedestal mount.



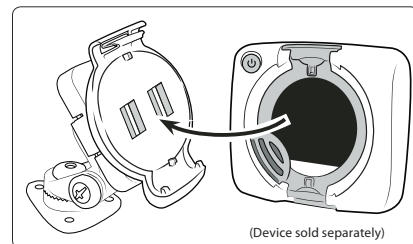
- Step 1. Find a safe location on the dashboard or console to mount the pedestal. Make sure the area is clean and dry. Use the included alcohol pad to clean the mounting surface if necessary. Remove the adhesive backing (A) under the triangular pedestal and firmly press into place.
- Step 2. Using a screwdriver, tighten the 3 screws (B) through the pedestal base into the mounting surface.
- Step 3. Adjust the angle of the pedestal head by firmly holding the base and rotating to the desired angle.

Device Attachment

- Step 1. Attach the adapter plate to the mount by inserting the dual-T tabs of the mount (A) into the dual-T slots on the adapter plate (B).



- Step 2. While holding the mounted adapter plate, gently insert the TomTom device (not included, sold separately) into the adapter plate until an audible click is heard.



ARKON
RESOURCES INC. *The Mobile Mounting Specialists™*

Consumer Hotline:

USA (800) 841-0884

INT'L (626) 254-9005

Monday - Friday 9am - 5pm, PST

www.arkon.com

Arcadia, CA 91006 USA

Designed in USA | Made in Taiwan & China

© Copyright 2010 Arkon Resources, Inc.