

# TTSE121-USB | Powered Mini USB Lighter Socket Mount for TomTom Start™ & Ease™



## Package Contents:

- (1) GN097-2-USB - Lighter socket mount with Mini USB power cable
- (1) APTTSE - Adapter plate for TomTom Start™ and Ease™

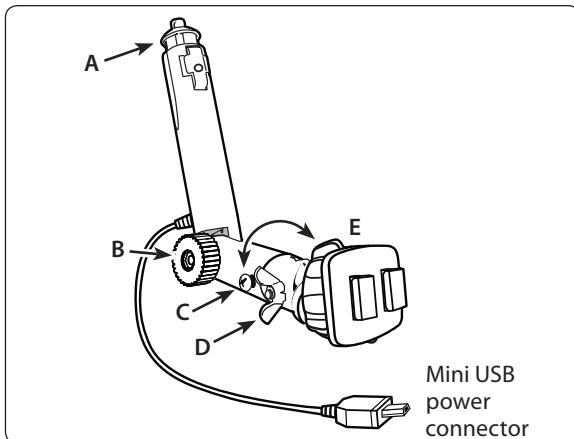
Specs: Input (12V - 24V) outlets, Output (5V, 500mA)

Make sure the power mentioned in the specs is compatible with your device prior to use.

**!** Do not place mount in or near an air bag deployment zone or where it will obstruct view of the road.

## Mount Installation Instructions

- Step 1. Insert the DC Power plug (A) completely into the vehicle's 12V-24V / lighter socket.
- Step 2. Adjust the angle of the pedestal arm by tightening the adjustment knob (B) to the desired placement angle.

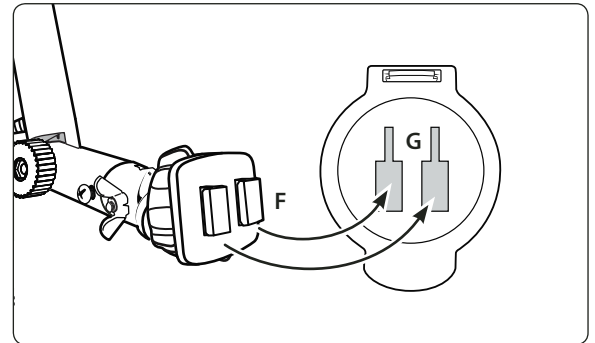


- Step 3. If necessary, adjust the rotation of the mounting head by tightening the screw (C) with a screwdriver.
- Step 4. Adjust the angle of the pedestal head by tightening the wing nut (D) to the desired angle.
- Step 5. Adjust the angle of the pedestal head by tightening the adjustment ring (E).

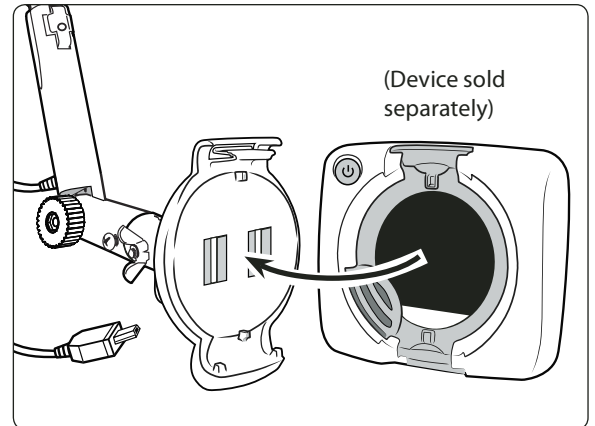
**Note:** The mini USB power connector will only power / charge your device. Inserting the power connector in a micro USB sync port will not provide power to the device.

## Device or Cradle Attachment (not included)

- Step 1. Attach the adapter plate to the pedestal by inserting the dual-T tabs of the pedestal (F) into the dual-T slots on the adapter plate (G).



- Step 2. While holding the mounted TomTom adapter plate, gently insert the TomTom device (not included, sold separately) into the adapter plate until an audible click is heard. Attach the mini USB power connector (H) to the device's power socket (I) (device not included, sold separately).



## **!** Safety Precautions

Do not install Arkon products over an air bag cover or within the air bag deployment zone. Arkon Resources, Inc. assumes no responsibility of liability for injury or death as a result of car crashes and/or air bag deployment.

Arkon is not responsible for any damages caused to your car, your device, or yourself due to the installation or use of this pedestal mount.

**ARKON**  
RESOURCES INC. The Mobile Mounting Specialists™

Consumer Hotline:

USA (800) 841-0884

INT'L (626) 254-9005

Monday - Friday 9am - 5pm, PST

[www.arkon.com](http://www.arkon.com)

Arcadia, CA 91006 USA

Designed in USA | Made in Taiwan & China

© Copyright 2010 Arkon Resources, Inc.