

TTSE116 | Vehicle Dashboard & Console Mount for TomTom Start™ & Ease™

GN016-SBH
Swivel Mount Pedestal



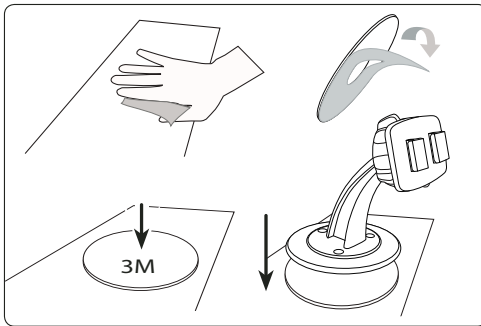
Package Contents:

- (1) GN016-SBH - Dashboard or console mounting pedestal
- (1) APTTSE - Adapter plate for TomTom Start™ & Ease™
- (1) Circular foam adhesive mounting disc
- (1) Set of 3 mounting screws (optional)
- (1) Alcohol cleaning pad

Do not place mount in or near an air bag deployment zone or where it will obstruct view of the road.

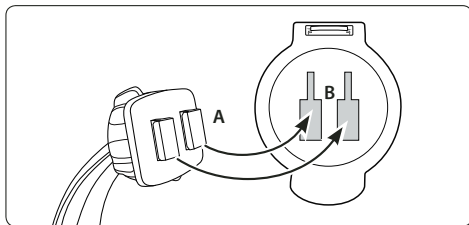
Vehicle Dashboard or Console Mount Installation

- Step 1. Find a safe location on the dash or console. Use the included alcohol pad to clean the mounting surface if necessary. Remove the paper backing on the adhesive 3M disc and firmly press in place.
- Step 2. Remove the paper on the top side and firmly press the mount down on the 3M adhesive disc.

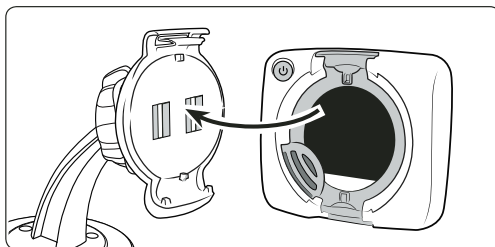


APTTSE Adapter Plate Attachment

- Step 1. Attach the TomTom adapter plate to the mount by inserting the dual-T tabs of the mount (A) into the dual-T slots on the adapter plate (B).



- Step 2. While holding the mounted TomTom adapter plate, gently insert the TomTom device (not included, sold separately) into the adapter plate until an audible click is heard.



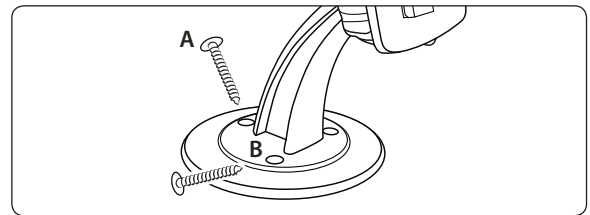
Optional Screw Mounting

Safety Precautions

Drilling into the dashboard or console will permanently damage the vehicle. Use caution and consult a mobile install professional to avoid drilling into the gas tank, electrical system or other highly sensitive vehicle components.

Arkon Resources, Inc. is not responsible for any damages caused to your car or yourself due to the install of the pedestal mount.

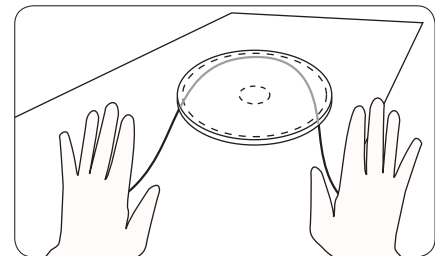
- Step 1. Clean the dashboard or console surface area thoroughly with the included alcohol pad. Allow the area to dry.



- Step 2. Using a screwdriver, tighten the 3 screws (A) through the pedestal base holes (B) into the mounting surface.

Disc Removal Instructions

- Step 1. Prepare the surface around the disc by applying a generous amount of rubbing alcohol or similar adhesive removal product to the area with a cotton swab. Let the liquid saturate the adhesive area for about a minute.
- Step 2. Take a long piece of dental floss in each hand and slowly work back and forth at the base of the adhesive disc. Gently use the dental floss to cut the adhesive from the dash or console until the black plastic disc is removed.



- Step 3. If the sticky adhesive area breaks apart or does not come off completely, re-apply a small amount of alcohol (or adhesive removal liquid) and carefully lift off the remaining area by hand.

Safety Precautions

Do not install Arkon products over an air bag cover or within the air bag deployment zone. Arkon Resources, Inc. assumes no responsibility of liability for injury or death as a result of car crashes and/or air bag deployment.

Arkon is not responsible for any damages caused to your car, your device, or yourself due to the installation or use of this pedestal mount.

ARKON
RESOURCES INC.

The Mobile Mounting Specialists™

Consumer Hotline:

USA (800) 841-0884

INT'L (626) 254-9005

Monday - Friday 9am - 5pm, PST

www.arkon.com

Arcadia, CA 91006 USA

Designed in USA | Made in China

© Copyright 2010 Arkon Resources, Inc.