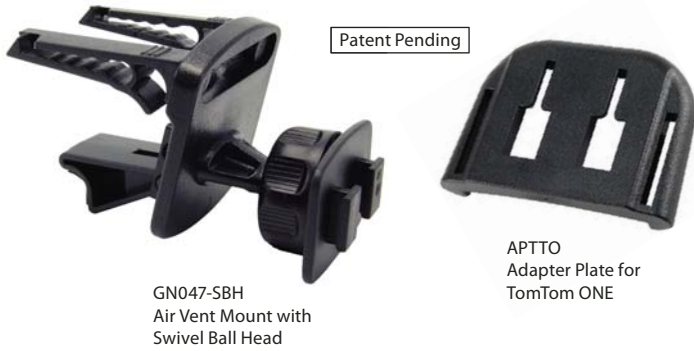


# TTO129-SBH | Removable Air Vent Mount for TomTom® ONE™ GPS Devices



GN047-SBH  
Air Vent Mount with  
Swivel Ball Head

APTTO  
Adapter Plate for  
TomTom ONE

## Package Contents:

- (1) GN047-SBH - Removable air vent with dual T swivel ball head
- (1) APTTO - Adapter plate for TomTom ONE Series pattern

## Compatible with:

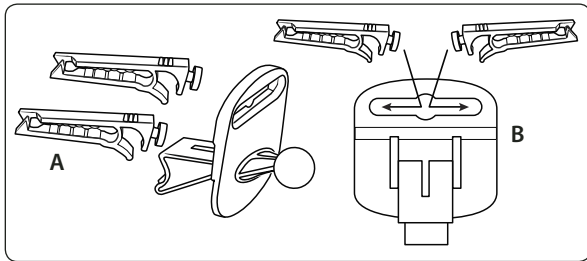
- TomTom ONE - 1st, 2nd, & 3rd Editions

TomTom brand name and ONE product names are trademarks, or registered trademarks of TomTom International NV. Arkon Resources, Inc. is not affiliated with TomTom International NV.

**⚠** Use caution when installing and removing the vent mount and adjusting the swivel movement to avoid damaging your air vents.

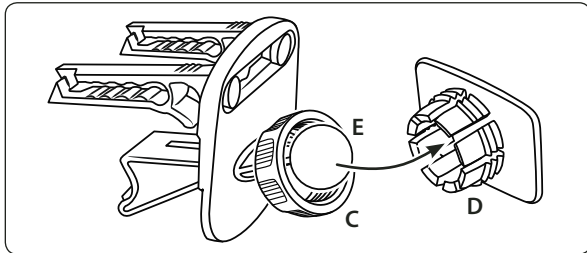
## Air Vent Mount Assembly

- Step 1. Attach the vent mounting clips (A) to the back of the pedestal (B) with the vent clips positioned with the flat sides facing up.



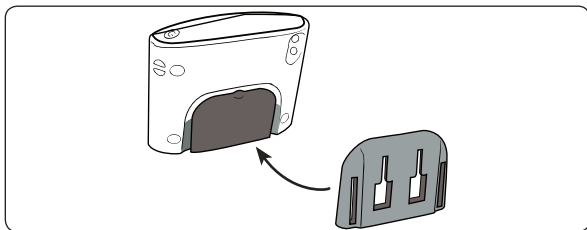
## Swivel Ball Head Assembly Attachment

- Step 1. Slip the tightening ring (C) over the air vent mount ball. Snap the dual-T head adapter plate (D) on to the mounting ball (E). Screw the tightening ring over the adapter plate until securely holding the plate. Swivel to adjust the angle of the dual-T head.



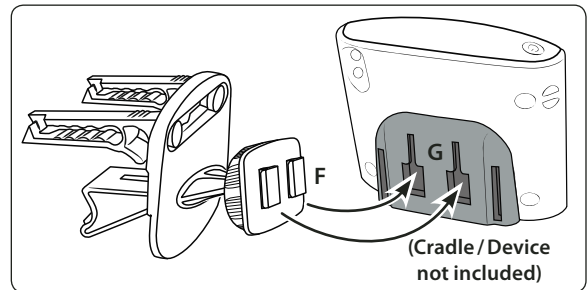
## TomTom ONE Adapter Plate Installation

- Step 1. Slide the adapter plate up into the grooves on the back of the TomTom ONE device. (Not included, sold separately.)



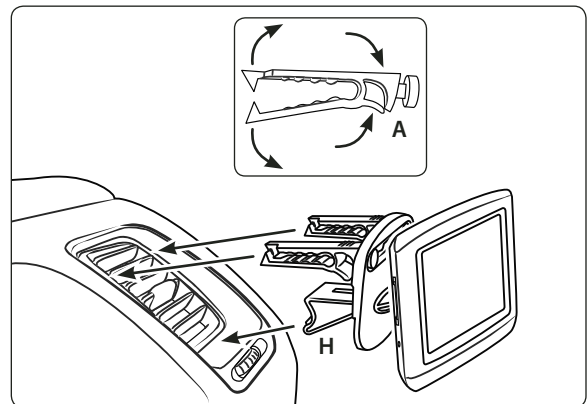
## TomTom Device Attachment to Air Vent Mount

- Step 1. Attach your TomTom ONE device (not included, sold separately) to the swivel dual-T head by inserting the dual-T tabs (F) into the dual T-slots (G) on the back of the adapter plate.



## Insertion of Mount Assembly into Air Vent

- Step 1. Pinch the vent mounting clips (A) so that the teeth open and gently insert vent pedestal into vent louvres until the mounting clips are attached to the fin/blade of the vent. Adjust the support leg (H) vertically until it rests firmly along the bottom of the vent or dash surface below the vent.



## ⚠ Safety Precautions

Follow all manufacturer safety guidelines for operating your device. Failure to practice safe usage of GPS device while driving may result in damage, injury, or death. Do not install Arkon products over an air bag cover or within the air bag deployment zone.

Arkon is not responsible for any damages caused to your car, your device, or yourself due to the installation or use of this pedestal mount.

**ARKON**  
RESOURCES INC. *The Mobile Mounting Specialists™*

Consumer Hotline:

USA (800) 841-0884

INT'L (626) 254-9005

Monday - Friday 9 am - 5 pm, PST

[www.arkon.com](http://www.arkon.com)

Arcadia, CA 91006 USA

Designed in USA | Made in China and Taiwan

© Copyright 2009 Arkon Resources, Inc.