

TTGO129-ST-RVC | Removable Air Vent Mount for Tomtom Go 520/720/920/920T

Compatible with:

- Tomtom GO 520 / 720 / 920 / 920T devices



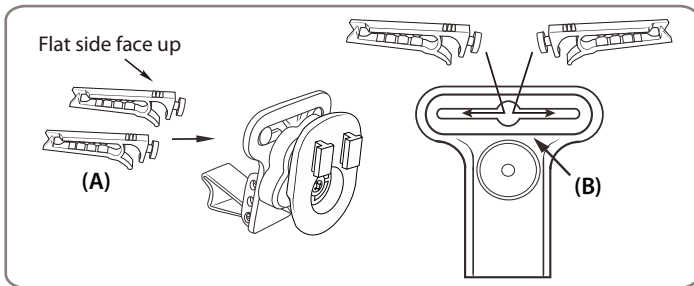
CM047-ST2-RVC



APTTGO520
for Tomtom GO 520,
720, 920, and 920T

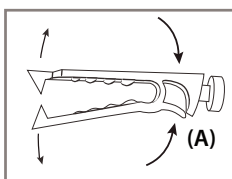
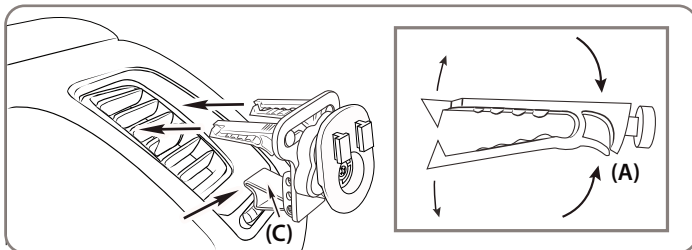
Pedestal Assembly

Step 1. Attach the vent mounting clips (A) to the back of the pedestal (B) with the vent clips positioned with the flat sides facing up.



Insertion of Pedestal into the Air Vent


Step 1. Pinch the vent mounting clips (A) so that the teeth open and gently insert vent pedestal into vent louvres until the mounting clips are attached to the fin/blade of the vent. Adjust the support leg (C) vertically until it rests firmly along the bottom of the vent or dash surface below the vent.



Pedestal Removal

Step 1. Remove the device from the vent mount assembly.

Step 2. Pinch the vent clips (A) so that the teeth open and carefully slide the pedestal from the vent/blade.

 Use caution when removing the pedestal. Make sure that the teeth of the vent clips are open enough to not damage vent.


Safety Precautions

Do not install Arkon products over an air bag cover or within the air bag deployment zone. Arkon Resources, Inc. assumes no responsibility of liability for injury or death as a result of car crashes and/or air bag deployment.

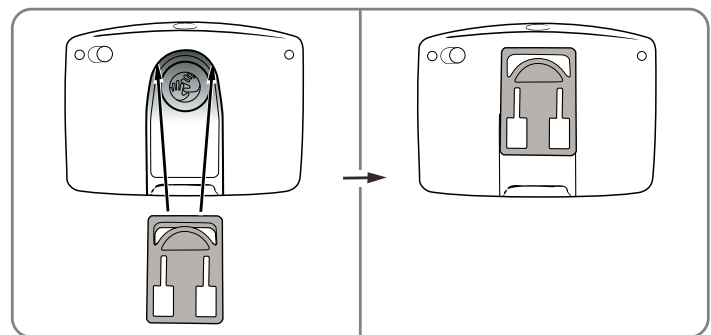
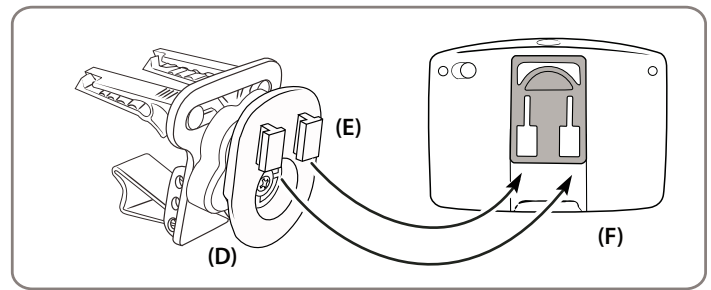
Arkon Resources, Inc. is not responsible for any damages caused to your car, your device, or yourself due to the installation or use of the pedestal mount.

Pedestal Adjustment & Device Cradle Installation

Step 1. Adjust the lateral angle and the 360° rotation of the pedestal head by loosening the swivel tightening ring (D).

 Use caution when adjusting the swivel movement to avoid damaging your air vents.

Step 2. Attach the device to the pedestal by inserting the dual T-Tabs of the pedestal (E) into the T-slots of the cradle (F).



Instructions for APTTGO520 Adapter Plate

Step 1. Attach the adapter plate by sliding it up into the slot on the back of the Tomtom GO 520, 720, 920, and 920T device as shown above.

Step 2. Follow step 2 from *Pedestal Adjustment & Device Cradle Installation* above.

ARKON
RESOURCES INC.

The Mobile Mounting Specialists™

Consumer Hotline:
(USA) (800) 841-0884
(INT'L) (626) 254-9005
Mon-Fri. 9am-5pm, PST

www.arkon.com
Arcadia, CA 91006 USA
Made in Taiwan

© Copyright 2007 Arkon Resources, Inc.