

TT129-ST-RVC | Removable Air Vent Pedestal for Tomtom GPS Devices

Compatible with:

- Tomtom One - 1st, 2nd, & 3rd Editions
- Tomtom One (UK version)
- Tomtom One XL - 1st, 2nd, & 3rd Editions
- Tomtom One XL-S - 1st, 2nd, & 3rd Editions
- Tomtom GO 520 / 720 / 920 / 920T



CM047-ST2-RVC



APTTO
for Tomtom One



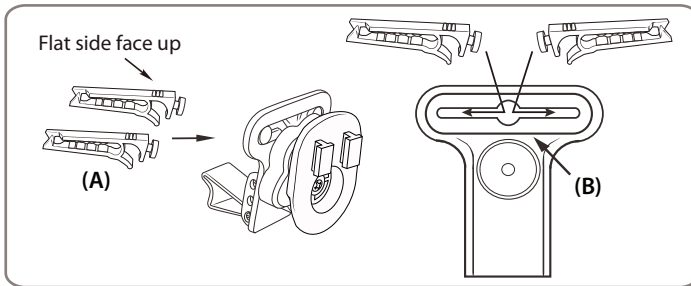
APTTOXL
for Tomtom One XL
and Tomtom One XL-S



APTTGO520
for Tomtom GO 520,
720, 920, and 920T

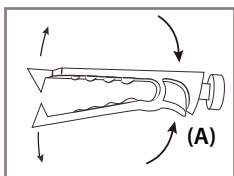
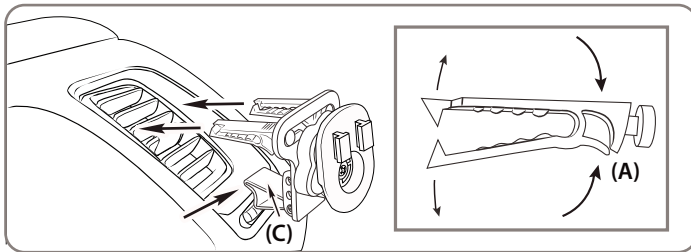
Pedestal Assembly

Step 1. Attach the vent mounting clips (A) to the back of the pedestal (B) with the vent clips positioned with the flat sides facing up.



Insertion of Pedestal into the Air Vent

Step 1. Pinch the vent mounting clips (A) so that the teeth open and gently insert vent pedestal into vent louvers until the mounting clips are attached to the fin/blade of the vent. Adjust the support leg (C) vertically until it rests firmly along the bottom of the vent or dash surface below the vent.



Pedestal Removal

Step 1. Remove the device from the vent mount assembly.

Step 2. Pinch the vent clips (A) so that the teeth open and carefully slide the pedestal from the vent/blade.

! Use caution when removing the pedestal. Make sure that the teeth of the vent clips are open enough to not damage vent.

! Safety Precautions

Do not install Arkon products over an air bag cover or within the air bag deployment zone. Arkon Resources, Inc. assumes no responsibility of liability for injury or death as a result of car crashes and/or air bag deployment.

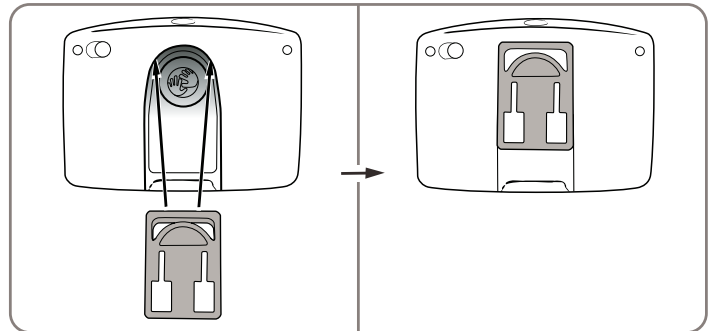
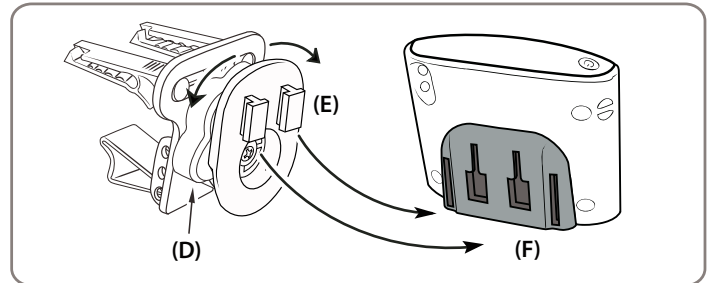
Arkon Resources, Inc. is not responsible for any damages caused to your car, your device, or yourself due to the installation or use of the pedestal mount.

Tomtom One, One XL, and One XL-S Mount Installation Pedestal Adjustment and Cradle Attachment

Step 1. Adjust the lateral angle and the rotation of the pedestal head by loosening the swivel tightening ring (D).

! Use caution when adjusting the swivel movement to avoid damaging your air vents.

Step 2. Attach the device cradle to the pedestal by inserting the dual T-Tabs of the pedestal (E) into the T-slots of the cradle (F). (Cradle Sold Separately)



Instructions for APTTGO520 Adapter Plate

Step 1. Attach the adapter plate by sliding it up into the slot on the back of the Tomtom GO 520, 720, 920, or 920T device as shown above.

Step 2. Follow step 2 from *Pedestal Adjustment & Device Cradle Attachment* above.

ARKON
RESOURCES INC.

The Mobile Mounting Specialists™

Consumer Hotline:
(USA) (800) 841-0884
(INT'L) (626) 254-9005
Mon-Fri. 9am-5pm, PST

www.arkon.com
Arcadia, CA 91006 USA
Made in Taiwan

© Copyright 2007 Arkon Resources, Inc.