

# TT129-SRVC | Removable Swivel Air Vent Mount for TomTom® GPS



## Package Contents:

- (1) CM047-SRVC-2 - Air vent mount
- (1) APTTO - Adapter plate for TomTom ONE™ Series
- (1) APTTOXL - Adapter plate for TomTom ONE XL / XL-S™ Series
- (1) APTTGO520 - Adapter plate for TomTom GO™ Series
- (1) APTTEP - Adapter plate for TomTom EasyPort™ Series

## TomTom Device Compatibility:

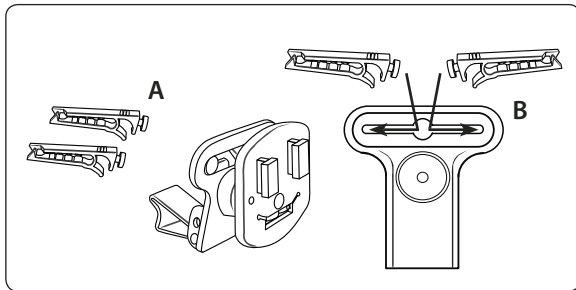
- TomTom ONE 130, ONE 130-S (TomTom EasyPort Mount)
- TomTom ONE (US Edition, US 3rd Edition)
- TomTom ONE XL (1st Edition) - TomTom ONE XL-S (1st Edition)
- TomTom ONE 22, ONE 22 Regional, ONE 22 Regional Traffic
- TomTom XL 22, XL 22 Regional (TomTom EasyPort Mount)
- TomTom XL 330, XL 330-S (TomTom EasyPort Mount)
- TomTom ONE UK / EUROPE (NEW Edition aka 2nd Edition, 3rd Edition)
- TomTom GO 520 / 530 / 720 / 730 / 920 / 920T / 930

TomTom, ONE, GO, and EasyPort are product names, trademarks, or registered trademarks of TomTom International BV. Arkon Resources, Inc. is not affiliated with TomTom International BV.

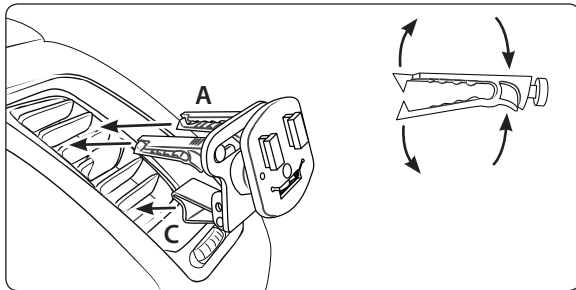
**⚠** Use caution when installing and removing the vent mount and adjusting the swivel movement to avoid damaging your air vents.

## Air Vent Mount Assembly and Installation

Step 1. Attach the vent mounting clips (A) to the back of the pedestal (B) with the vent clips positioned with the flat sides facing up.

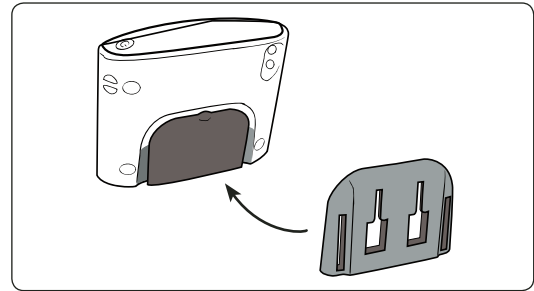


Step 2. Pinch the vent mounting clips (A) so that the teeth open and gently insert vent pedestal into vent louvres until the mounting clips are attached to the fin/blade of the vent. Adjust the support leg (C) vertically until it rests firmly along the bottom of the vent or dash surface below the vent.



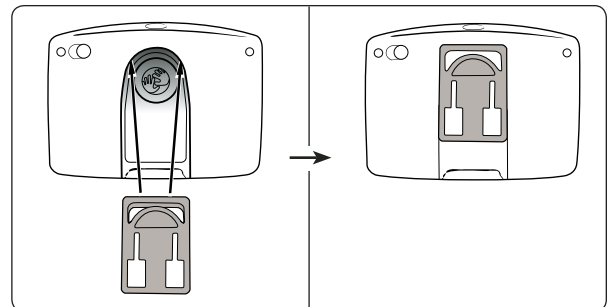
## TomTom ONE, ONE XL, and ONE XL-S Plate Installation

Step 1. Slide the adapter plate up into the grooves on the back of the TomTom ONE, ONE XL, or ONE XL-S.



## TomTom GO Adapter Plate Installation

Step 1. Attach the adapter plate by sliding it up into the slot on the back of the TomTom GO 520, 530, 720, 730, 920, 920T, and 930 models device as shown below.



## ⚠ Safety Precautions

Do not install Arkon products over an air bag cover or within the air bag deployment zone. Arkon Resources, Inc. assumes no responsibility of liability for injury or death as a result of car crashes and/or air bag deployment.

Arkon is not responsible for any damages caused to your car, your device, or yourself due to the installation or use of this pedestal mount.

**ARKON**  
RESOURCES INC.

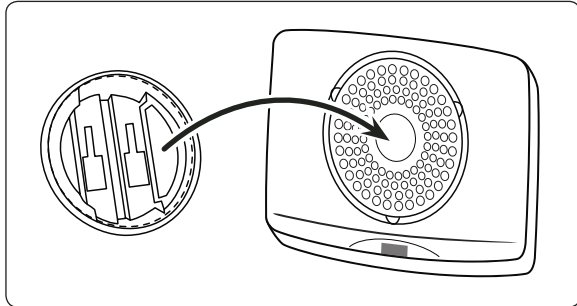
The Mobile Mounting Specialists™

Consumer Hotline:  
USA (800) 841-0884  
INT'L (626) 254-9005  
Monday - Friday 9 am - 5 pm, PST

[www.arkon.com](http://www.arkon.com)  
Arcadia, CA 91006 USA  
Designed in USA | Made in China and Taiwan  
© Copyright 2008 Arkon Resources, Inc.

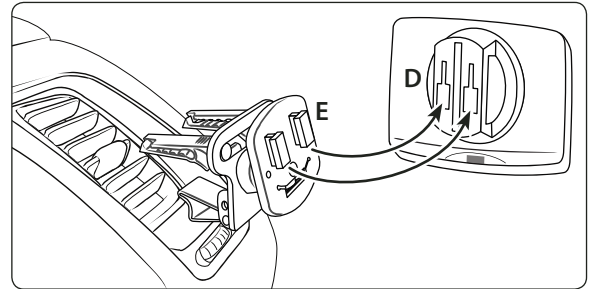
**TomTom EasyPort Adapter Plate Installation**

Step 1. While holding the adapter plate, gently insert the device (not included, sold separately) into the adapter plate until an audible click is heard.



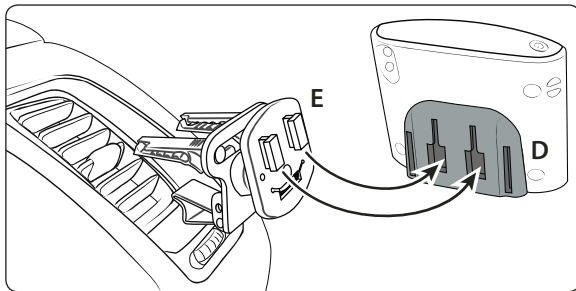
**TomTom EasyPort Device Attachment**

Step 1. Connect the dual T-slots (D) on the back of the adapter plate to the dual T-tabs (E) on the air vent pedestal head.



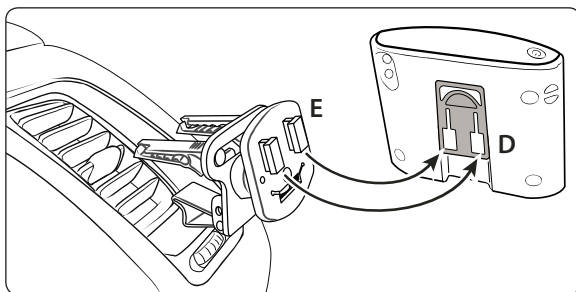
**TomTom ONE and ONE XL Device Attachment**

Step 1. Connect the dual T-slots (D) on the back of the adapter plate to the dual T-tabs (E) on the air vent pedestal head.



**TomTom GO Series Device Attachment**

Step 1. Connect the dual T-slots (D) on the back of the adapter plate to the dual T-tabs (E) on the air vent pedestal head.



**! Safety Precautions**  
 Do not install Arkon products over an air bag cover or within the air bag deployment zone. Arkon Resources, Inc. assumes no responsibility of liability for injury or death as a result of car crashes and/or air bag deployment.  
 Arkon is not responsible for any damages caused to your car, your device, or yourself due to the installation or use of this pedestal mount.

**ARKON**  
**RESOURCES INC.** The Mobile Mounting Specialists™

Consumer Hotline: [www.arkon.com](http://www.arkon.com)  
 USA (800) 841-0884 Arcadia, CA 91006 USA  
 INT'L (626) 254-9005 Designed in USA | Made in China and Taiwan  
 Monday - Friday 9 am - 5 pm, PST © Copyright 2008 Arkon Resources, Inc.