

TT129-SBH | Removable Air Vent Mount for TomTom GPS



Package Contents:

- (1) GN047-SBH Air Vent Mount with Swivel Ball Head
- (1) APTTO - Adapter plate for TomTom ONE™ Series
- (1) APTTOXL - Adapter plate for TomTom ONE XL™ and XL-S™ Series
- (1) APTTGO520 - Adapter plate for TomTom GO™ Series
- (1) APTTPE - Adapter plate for TomTom EasyPort™ pattern
- (1) APTTSE - Adapter plate for TomTom Start™ and Ease™

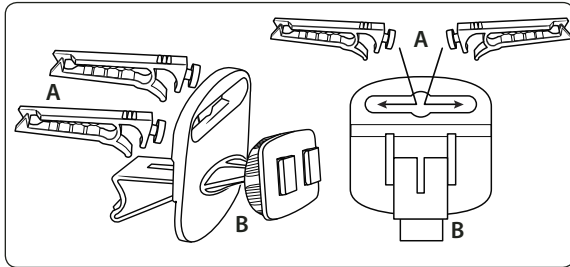
TomTom Device Compatibility:

- TomTom ONE 125 125-SE (TomTom EasyPort Mount)
- TomTom ONE 130, ONE 130-S (TomTom EasyPort Mount)
- TomTom ONE 140, ONE 140-S (TomTom EasyPort Mount)
- TomTom XL 325, XL 325-S, XL 325-SE (TomTom EasyPort Mount)
- TomTom XL 330, XL 330-S (TomTom EasyPort Mount)
- TomTom XL 335 Series (TomTom EasyPort Mount)
- TomTom XL 340, XL 340-S, XL 340 LIVE Series (TomTom EasyPort Mount)
- TomTom XL 350 Series (TomTom EasyPort Mount)
- TomTom XXL 530-S, XXL 535-T, XXL 540-S/WTE, XXL 550 Series (TomTom EasyPort Mount)
- TomTom ONE (US Edition, US 3rd Edition)
- TomTom ONE XL (1st Edition) - TomTom ONE XL-S (1st Edition)
- TomTom ONE 22, ONE 22 Regional, ONE 22 Regional Traffic
- TomTom XL 22, XL 22 Regional (TomTom EasyPort Mount)
- TomTom ONE UK / EUROPE (NEW Edition aka 2nd Edition, 3rd Edition)
- TomTom GO 520 / 530 / 630 / 720 / 730 / 920 / 920T / 930
- TomTom Start and Ease

TomTom, ONE, GO, and EasyPort, Start and Ease are product names, trademarks, or registered trademarks of TomTom International NV. Arkon Resources, Inc. is not affiliated with TomTom International b.v.

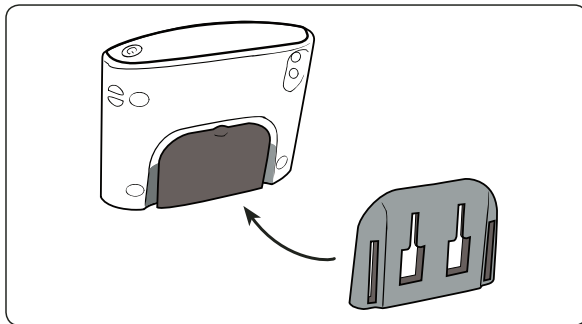
Air Vent Mount Assembly

- Step 1. Attach the vent mounting clips (A) to the back of the pedestal (B) with the vent clips positioned with the flat sides facing up.



TomTom ONE, ONE XL, and ONE XL-S Plate Installation

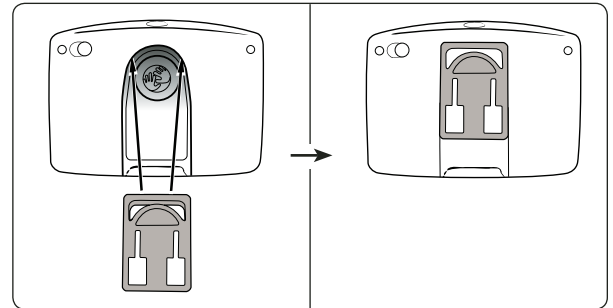
- Step 1. Slide the adapter plate up into the grooves on the back of the TomTom ONE, ONE XL, or ONE XL-S.



Continued on next column...

TomTom GO Adapter Plate Installation

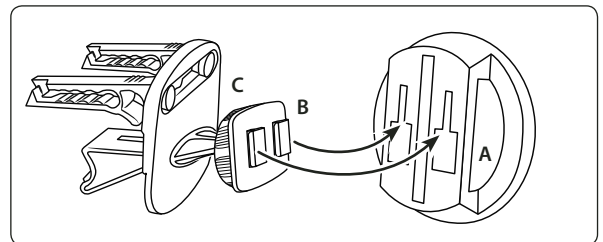
- Step 1. Attach the adapter plate by sliding it up into the slot on the back of the TomTom GO 520, 530, 630, 720, 730, 920, 920T, and 930 models device as shown below.



- Step 2. Attach the device with adapter plate to the mount as shown in the diagram above.

TomTom EasyPort Adapter Plate Installation

- Step 1. Connect the dual T-slots (A) on adapter plate to the dual T-tabs (B) on the pedestal head. Adjust the angle of the head by tightening the head adjustment knob (C).



Continued on next page...

! Do not place mount in or near an air bag deployment zone or where it will obstruct view of the road.

! **Safety Precautions**
Follow all manufacturer safety guidelines for operating your device. Failure to practice safe usage of GPS device while driving may result in damage, injury, or death.

Arkon is not responsible for any damages caused to your car, your device, or yourself due to the installation or use of this pedestal mount.

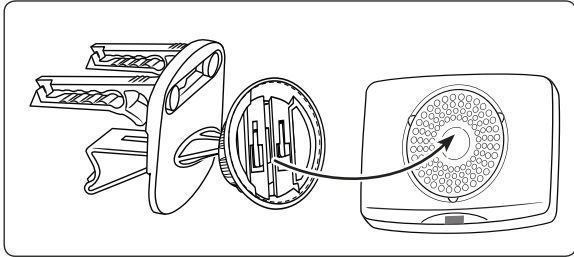
ARKON®
RESOURCES INC. The Mobile Mounting Specialists™

Consumer Hotline:
USA (800) 841-0884
INT'L (626) 254-9005
Monday - Friday 9 am - 5 pm, PST

www.arkon.com
Arcadia, CA 91006 USA
Designed in USA | Made in China
© Copyright 2010 Arkon Resources, Inc.

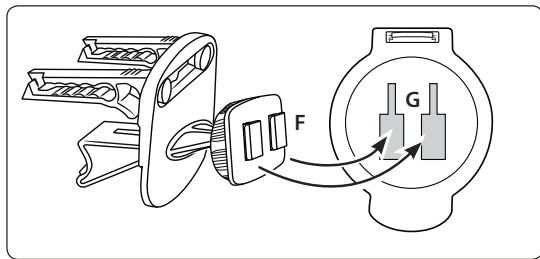
TomTom EasyPort Device Insertion

Step 2. While holding the mounted adapter plate, gently insert the device (not included, sold separately) into the adapter plate until an audible click is heard. The device can then be rotated into the desired viewing angle.



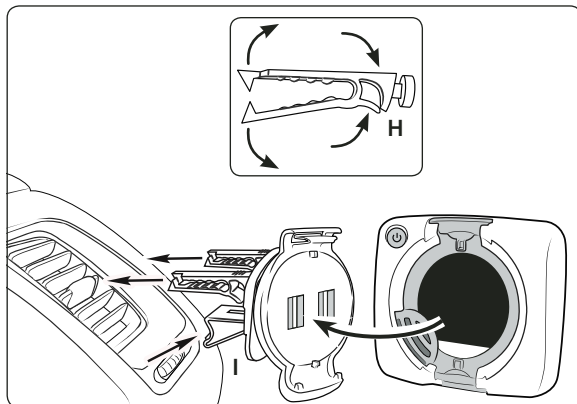
Attach Device or Cradle to Air Vent Mount

Step 1. Attach your cradle or device (not included, sold separately) to the dual-T head by inserting the dual-T tabs (F) into the dual-T slots (G) on the back of the cradle or device.



Insertion of Mount Assembly into Air Vent

Step 2. Pinch the vent mounting clips (H) so that the teeth open and gently insert vent pedestal into vent louvres until the mounting clips are attached to the fin/blade of the vent. Adjust the support leg (I) vertically until it rests firmly along the bottom of the vent or dash surface below the vent.



Continued on next column...

Attaching a TomTom Device to Pedestal

Step 3. While holding the mounted TomTom adapter plate, gently insert the TomTom device (not included, sold separately) into the adapter plate until an audible click is heard.



Safety Precautions

Follow all manufacturer safety guidelines for operating your device. Failure to practice safe usage of GPS device while driving may result in damage, injury, or death.

Arkon is not responsible for any damages caused to your car, your device, or yourself due to the installation or use of this pedestal mount.

ARKON
RESOURCES INC.

The Mobile Mounting Specialists™

Consumer Hotline:

USA (800) 841-0884

INT'L (626) 254-9005

Monday - Friday 9 am - 5 pm, PST

www.arkon.com

Arcadia, CA 91006 USA

Designed in USA | Made in China

© Copyright 2010 Arkon Resources, Inc.