

# TT128 | 1" Multi Angle Adhesive Dashboard or Console Mount for TomTom® GPS



CM048-2  
1" Multi Angle  
Dashboard  
Mount



APTTGO520  
Adapter plate for  
TomTom GO x20, x30  
Check Compatibility



APTTO  
Adapter plate for  
TomTom ONE  
Check Compatibility



APTTOXL  
Adapter plate for  
TomTom ONE XL  
and XL-S  
Check Compatibility



APTTE  
Adapter Plate for  
TomTom Start™ & Ease™  
Check Compatibility



APTTEP  
Adapter Plate  
for EasyPort™  
Check Compatibility

## Package Contents:

- (1) CM048-2 1" Multi Angle Dashboard or Console Mount
- (1) Alcohol cleaning pad
- (1) APTTO - Adapter plate for TomTom ONE™ Series
- (1) APTTOXL - Adapter plate for TomTom ONE XL / XL-S™ Series
- (1) APTTGO520 - Adapter plate for TomTom GO™ Series
- (1) APTTEP - Adapter plate for TomTom EasyPort™ Series
- (1) APTTSE - Adapter plate for TomTom Start™ and Ease™

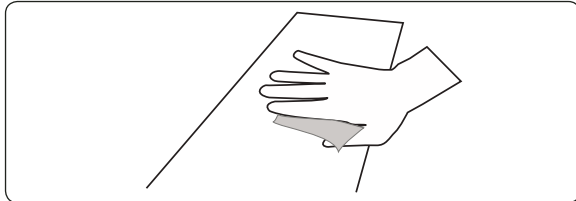
## TomTom Device Compatibility:

TomTom ONE 125 125-SE (TomTom EasyPort Mount)  
 TomTom ONE 130, ONE 130-S (TomTom EasyPort Mount)  
 TomTom ONE 140, ONE 140-S (TomTom EasyPort Mount)  
 TomTom XL 325, XL 325-S, XL 325-SE (TomTom EasyPort Mount)  
 TomTom XL 330, XL 330-S (TomTom EasyPort Mount)  
 TomTom XL 335 Series (TomTom EasyPort Mount)  
 TomTom XL 340, XL 340-S, XL 340 LIVE Series (TomTom EasyPort Mount)  
 TomTom XL 350 Series (TomTom EasyPort Mount)  
 TomTom XXL 530-S, XXL 535-T, XXL 540-S/WTE, XXL 550 Series (TomTom EasyPort Mount)  
 TomTom ONE (US Edition, US 3rd Edition)  
 TomTom ONE XL (1st Edition) - TomTom ONE XL-S (1st Edition)  
 TomTom ONE 22, ONE 22 Regional, ONE 22 Regional Traffic  
 TomTom XL 22, XL 22 Regional (TomTom EasyPort Mount)  
 TomTom ONE UK / EUROPE (NEW Edition aka 2nd Edition, 3rd Edition)  
 TomTom GO 520 / 530 / 630 / 720 / 730 / 920 / 920T / 930  
 TomTom Start and Ease

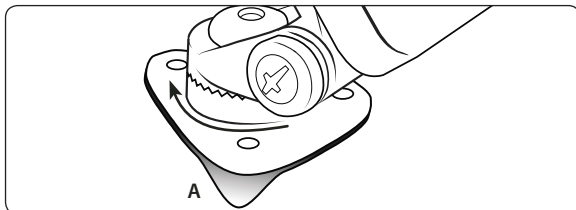
TomTom, ONE, GO, and EasyPort, Start and Ease are product names, trademarks, or registered trademarks of TomTom International NV. Arkon Resources, Inc. is not affiliated with TomTom International NV.

## Dash or Console Adhesive Mounting

- Step 1. Find a safe location on the dash or console to mount the pedestal. Make sure the area is clean and dry. Use the included alcohol pad to clean the mounting surface.



- Step 2. Remove the adhesive backing (A) under the triangular pedestal and firmly press into place.



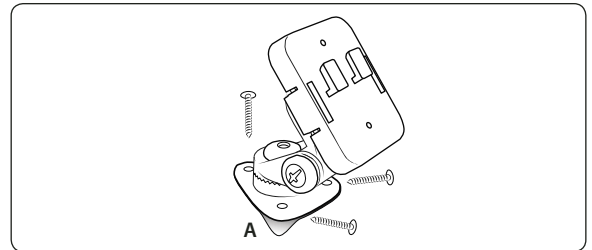
- Step 3. After adhesive has bonded at room temperature (approx. 72° F), allow 24 hours prior to use for best results.  
 Step 4. Adjust the angle of the pedestal head by firmly holding the base and rotating to the desired angle.

## Dash or Console Screw Mounting (Optional)

- Step 1. Find a safe location on the dash or console to mount the pedestal. Make sure the area is clean and dry. Use the included alcohol pad to clean the mounting surface. Remove the adhesive backing (A) under the triangular pedestal and firmly press into place.

Continued on next column...

- Step 2. Using a screwdriver, tighten the 3 screws (B) through the pedestal base into the mounting surface. Adjust the angle of the pedestal head by firmly holding the base and rotating to the desired angle.

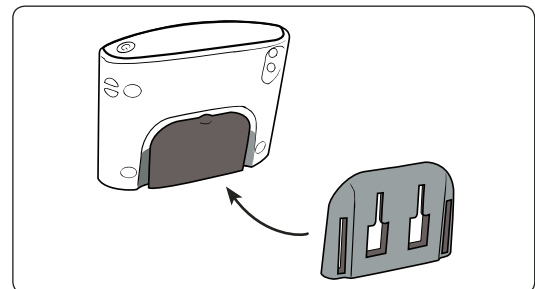


Do not place mount in or near an air bag deployment zone or where it will obstruct view of the road.

Drilling into the dash, floor, or console will permanently damage the vehicle. Use caution and consult a mobile install professional to avoid drilling into the gas tank, electrical system or other highly sensitive vehicle components.

## TomTom ONE, ONE XL, and ONE XL-S Plate Installation

- Step 1. Slide the adapter plate up into the grooves on the back of the TomTom ONE, ONE XL, or ONE XL-S.



Continued on next page...



## Safety Precautions

Do not install Arkon products over an air bag cover or within the air bag deployment zone. Arkon Resources, Inc. assumes no responsibility of liability for injury or death as a result of car crashes and/or air bag deployment.

Arkon is not responsible for any damages caused to your car, your device, or yourself due to the installation or use of this pedestal mount.

**ARKON**  
RESOURCES INC.

The Mobile Mounting Specialists™

Consumer Hotline:

USA (800) 841-0884

INT'L (626) 254-9005

Monday - Friday 9am - 5pm, PST

[www.arkon.com](http://www.arkon.com)

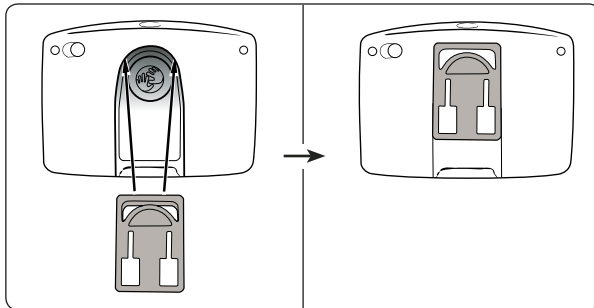
Arcadia, CA 91006 USA

Designed in USA | Made in China and Taiwan

© Copyright 2010 Arkon Resources, Inc.

**TomTom GO Adapter Plate Installation**

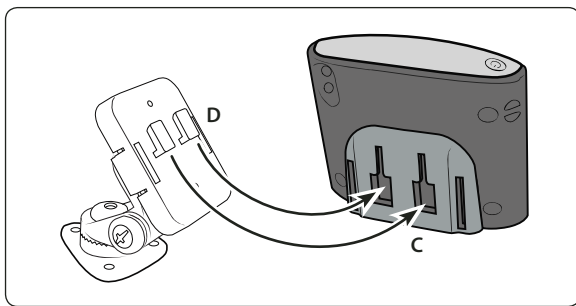
Step 1. Attach the adapter plate by sliding it up into the slot on the back of the TomTom GO 520, 530, 630, 720, 730, 920, 920T, and 930 models device as shown below.



Step 2. Attach the device with adapter plate to the mount as shown in the diagram above.

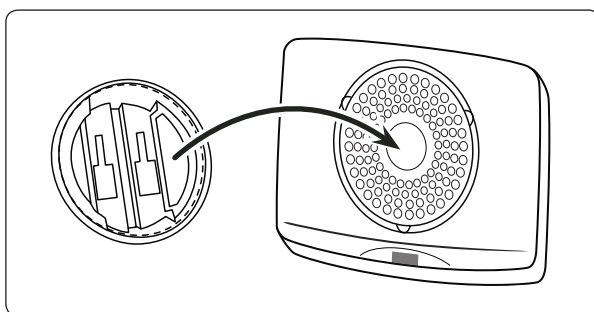
**TomTom ONE, ONE XL, and GO Device Attachment**

Step 1. Connect the dual T-slots (C) on the back of the adapter plate to the dual T-tabs (D) on the dash pedestal head.



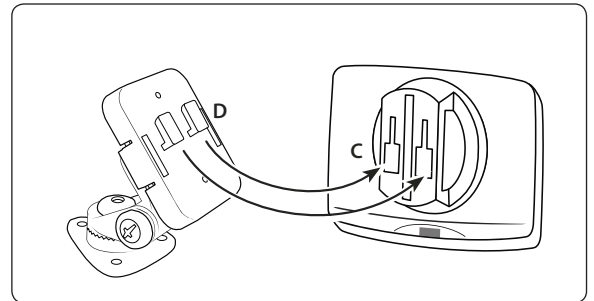
**TomTom EasyPort Adapter Plate Installation**

Step 1. While holding the adapter plate, gently insert the device (not included, sold separately) into the adapter plate until an audible click is heard.



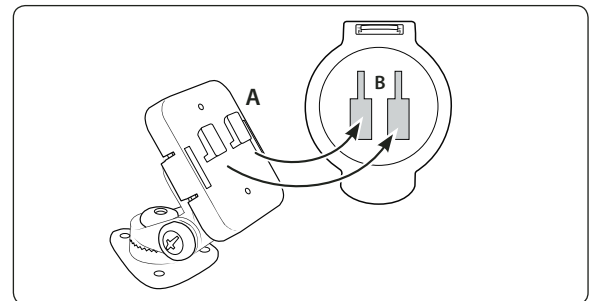
**TomTom EasyPort Device Attachment**

Step 1. Attach the device holder to the pedestal by inserting the dual T-Tabs of the pedestal (E) into the T-slots of the adapter plate (F).

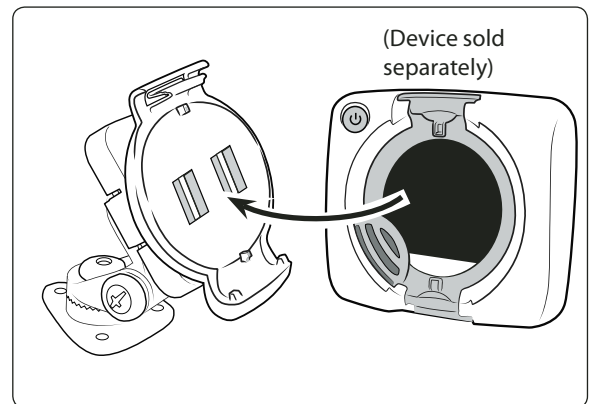


**TomTom Start & Ease Adapter Plate Attachment**

Step 1. Attach the TomTom dual-T adapter plate to the mount by inserting the dual-T tabs of the mount (A) into the dual-T slots on the adapter plate (B).



Step 2. While holding the mounted TomTom adapter plate, gently insert the TomTom device (not included, sold separately) into the adapter plate until an audible click is heard.



**! Safety Precautions**  
Do not install Arkon products over an air bag cover or within the air bag deployment zone. Arkon Resources, Inc. assumes no responsibility of liability for injury or death as a result of car crashes and/or air bag deployment.  
Arkon is not responsible for any damages caused to your car, your device, or yourself due to the installation or use of this pedestal mount.

**ARKON**  
**RESOURCES INC.** The Mobile Mounting Specialists™

Consumer Hotline: [www.arkon.com](http://www.arkon.com)  
USA (800) 841-0884 Arcadia, CA 91006 USA  
INT'L (626) 254-9005 Designed in USA | Made in China and Taiwan  
Monday - Friday 9am - 5pm, PST © Copyright 2010 Arkon Resources, Inc.