

TT124 | Adhesive Dash / Console Mount for Tomtom GPS Devices

Compatible with:

- Tomtom One - 1st, 2nd, & 3rd Editions
- Tomtom One (UK version)
- Tomtom One XL - 1st, 2nd, & 3rd Editions
- Tomtom One XL-S - 1st, 2nd, & 3rd Editions
- Tomtom GO 520 / 720 / 920 / 920T
- Tomtom GO 300 / 500 / 700



CM024-2
for GO 300, 500, & 700
without dual-T plate



APPTO
for Tomtom One



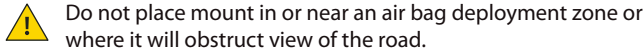
APPTOXL
for Tomtom One XL
and Tomtom One XL-S



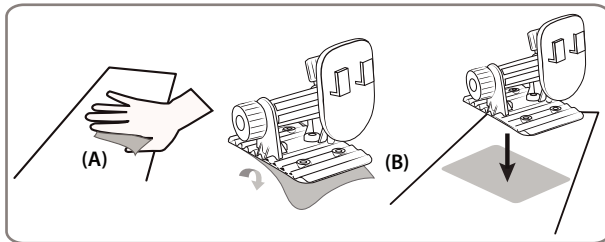
APTTGO520
for Tomtom GO 520,
720, 920, and 920T

Pedestal Mounting

Step 1. Choose the best location on vehicle to place the mount.



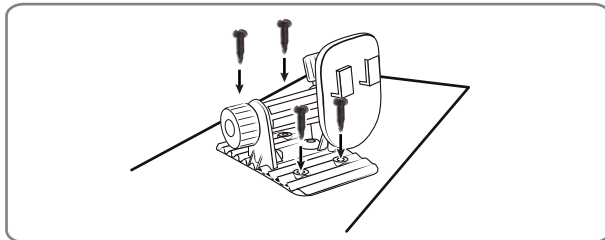
Step 2. Clean off dash surface with alcohol cleaning pad and let dry. (A) Do not attempt application of the dash mount if the temperature is below 68° F (20°C).



Step 3. Remove paper liner from adhesive on base (B) and affix adhesive to the dash. Let stand (at room temperature) for 24 hours before using.

Pedestal Mounting with screws (Optional)

Step 1. For a more permanent mount, connect the pedestal to the dash or console. This will require drilling into your vehicle's interior surface with self-tapping screws (not included).



Removal of Dash Mount

To remove the dash mount completely, use a cotton swab dipped in isopropyl alcohol. Simply peel up a corner of the dash mount adhesive and swab under the pad while gently pulling until the adhesive begins to release. Remove slowly. No damage will occur from the adhesive if it has been properly installed and removed per these instructions. You may see a slight discoloration between this area and other parts of your dash due to fading caused by the sun.



Safety Precautions

Drilling onto the dash, floor or console will permanently damage the vehicle. Use caution and consult a mobile install professional to avoid drilling into the gas tank, electrical system or other highly sensitive vehicle components.

Arkon Resources, Inc. is not responsible for any damages caused to your car or yourself due to the install of the pedestal mount.



Safety Precautions

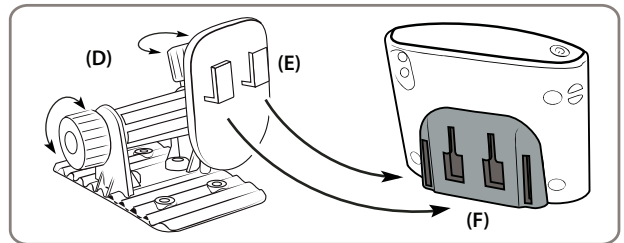
Do not install Arkon products over an air bag cover or within the air bag deployment zone. Arkon Resources, Inc. assumes no responsibility of liability for injury or death as a result of car crashes and/or air bag deployment.

Arkon Resources, Inc. is not responsible for any damages caused to your car, your device, or yourself due to the installation or use of the pedestal mount.

Tomtom One, One XL, and One XL-S Mount Installation Pedestal Adjustment and Cradle Attachment

Step 1. Adjust the arm angle and the pedestal head by tightening the adjustment knobs. (D)

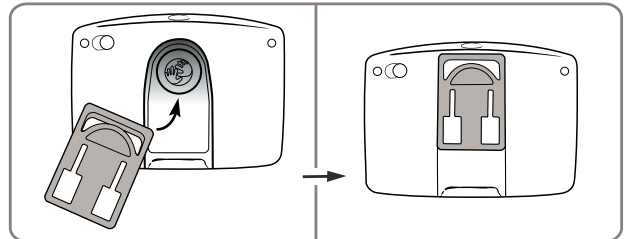
Step 2. Attach the adapter plate to the back of the Tomtom One, One XL, or One XL-S device. Attach the device and plate to the pedestal by inserting the dual T-Tabs of the pedestal (E) into the dual T-slots of the adapter plate. (F)



Instructions for APTTGO520 Adapter Plate

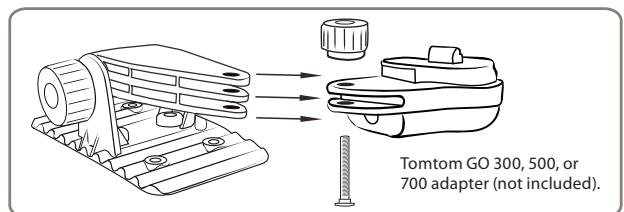
Step 1. Attach the adapter plate by sliding it up into the slot on the back of the Tomtom GO 520, 720, 920, and 920T device as shown above.

Step 2. Follow Step 2 above.



Instructions for GO 300, 500, and 700 adapter plate

Step 1. Remove the tightening nut and screw to remove the dual-T plate head. Insert the mounting arm into the Tomtom GO 300, 500, or 700 adapter (not included). Attach the device to the adapter plate.



ARKON
RESOURCES INC.

The Mobile Mounting Specialists™

Consumer Hotline:
(USA) (800) 841-0884
(INT'L) (626) 254-9005
Mon-Fri. 9am-5pm, PST

www.arkon.com
Arcadia, CA 91006 USA
Made in Taiwan

© Copyright 2007 Arkon Resources, Inc.