

TT115 | Travelmount® Windshield or Dashboard Mount for TomTom® GPS



GN014-SBH
Windshield
suction pedestal

AP013
Adhesive Dashboard Disc

APTGO520
Adapter plate for
TomTom GO x20, x30
Check Compatibility

APTTO
Adapter plate for
TomTom ONE
Check Compatibility

APTTOXL
Adapter plate for
TomTom ONE XL
and XL•S
Check Compatibility

APTSE
Adapter Plate for
TomTom Start™ & Ease™

APTTEP
Adapter Plate for
TomTom EasyPort
Check Compatibility

Package Contents:

- (1) GN014-SBH Travelmount® mini windshield suction pedestal
- (1) Alcohol cleaning pad
- (1) APTTO - Adapter plate for TomTom ONE™ Series
- (1) APTTOXL - Adapter plate for TomTom ONE XL / XL•S™ Series
- (1) APTTGO520 - Adapter plate for TomTom GO™ Series
- (1) APTTSE - Adapter plate for TomTom EasyPort™ Series
- (1) APTTSE - Adapter plate for TomTom Start™ and Ease™

TomTom Device Compatibility:

TomTom ONE 125 125-SE (TomTom EasyPort Mount)
 TomTom ONE 130, ONE 130-S (TomTom EasyPort Mount)
 TomTom ONE 140, ONE 140-S (TomTom EasyPort Mount)
 TomTom XL 325, XL 325-S, XL 325-SE (TomTom EasyPort Mount)
 TomTom XL 330, XL 330-S (TomTom EasyPort Mount)
 TomTom XL 335 Series (TomTom EasyPort Mount)
 TomTom XL 340, XL 340-S, XL 340 LIVE Series (TomTom EasyPort Mount)
 TomTom XL 350 Series (TomTom EasyPort Mount)
 TomTom XXL 530-S, XXL 535-T, XXL 540-S/WTE, XXL 550 Series (TomTom EasyPort Mount)
 TomTom ONE (US Edition, US 3rd Edition)
 TomTom ONE XL (1st Edition) - TomTom ONE XL-S (1st Edition)
 TomTom ONE 22, ONE 22 Regional, ONE 22 Regional Traffic
 TomTom XL 22, XL 22 Regional (TomTom EasyPort Mount)
 TomTom ONE UK / EUROPE (NEW Edition aka 2nd Edition, 3rd Edition)
 TomTom GO 520 / 530 / 630 / 720 / 730 / 920 / 920T / 930
 TomTom Start and Ease

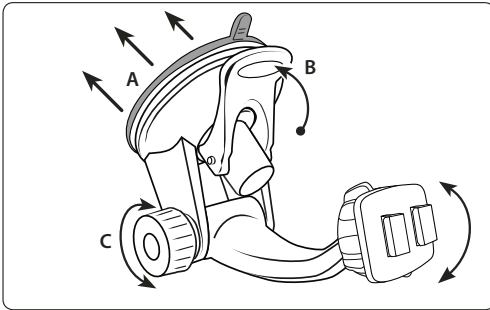
TomTom, ONE, GO, and EasyPort, Start and Ease are product names, trademarks, or registered trademarks of TomTom International NV. Arkon Resources, Inc. is not affiliated with TomTom International NV.

Do not place mount in or near an air bag deployment zone or where it will obstruct view of the road.

Patented & Patents Pending

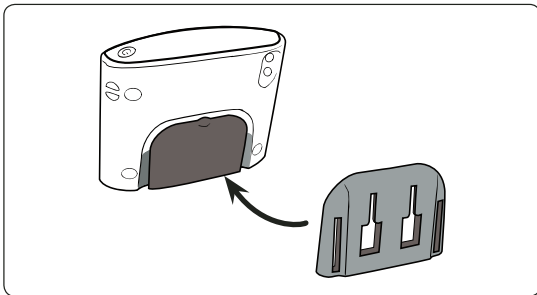
Windshield Mounting

- Step 1. Find a safe location on the interior of the vehicle's windshield to mount the pedestal. Firmly push the suction base (A) against the windshield and flip the base lever down (B) to the locked position. See diagram below.
- Step 2. Adjust the angle of the pedestal arm by tightening the angle adjustment knob (C) at the base to the desired angle.



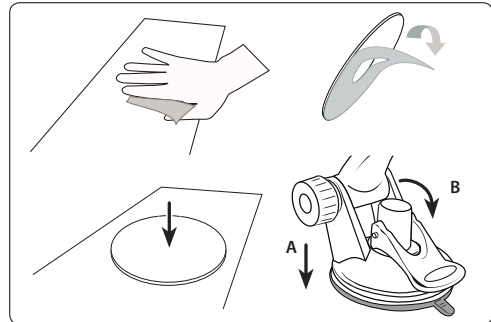
TomTom ONE, ONE XL, and ONE XL•S Plate Installation

- Step 1. Slide the adapter plate up into the grooves on the back of the TomTom ONE, ONE XL, or ONE XL•S device.



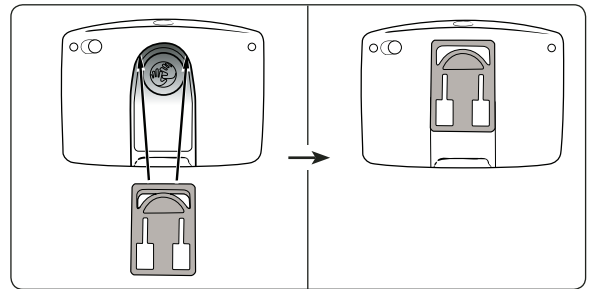
Dash or Console Mounting (Optional)

- Step 1. Find a safe location on the dash or console. Use the included alcohol pad to clean the mounting surface if necessary. Remove the paper backing on the adhesive disc and firmly press in place.
- Step 2. Place the pedestal's suction base (A) over the center of the circular disc. While firmly holding the pedestal on top of the disc, flip the base lever down (B) to the locked position.



TomTom GO Adapter Plate Installation

- Step 1. Attach the adapter plate by sliding it up into the slot on the back of the TomTom GO 520, 530, 630, 720, 730, 920, 920T or 930 device as shown. Attach the device as shown below.



Safety Precautions

Do not install Arkon products over an air bag cover or within the air bag deployment zone. Arkon Resources, Inc. assumes no responsibility of liability for injury or death as a result of car crashes and/or air bag deployment.

Arkon is not responsible for any damages caused to your car, your device, or yourself due to the installation or use of this pedestal mount.

ARKON
RESOURCES INC. The Mobile Mounting Specialists™

Consumer Hotline:

USA (800) 841-0884

INT'L (626) 254-9005

Monday - Friday 9am - 5pm, PST

www.arkon.com

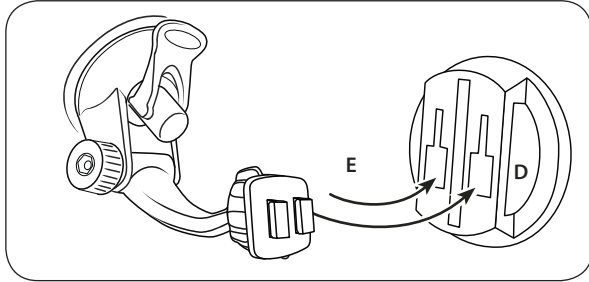
Arcadia, CA 91006 USA

Designed in USA | Made in China

© Copyright 2010 Arkon Resources, Inc.

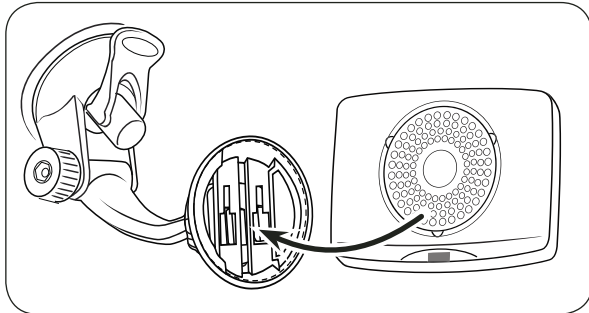
TomTom EasyPort Adapter Plate Installation

Step 1. Connect the dual T-slots (D) on adapter plate to the dual T-tabs (E) on the pedestal head. Adjust the angle of the head by tightening the head adjustment knob (F).



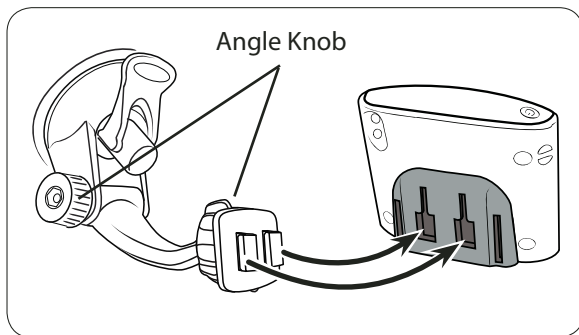
TomTom EasyPort Device Insertion

Step 1. While holding the mounted adapter plate, gently insert the device (not included, sold separately) into the adapter plate until an audible click is heard. The device can then be rotated into the desired viewing angle.



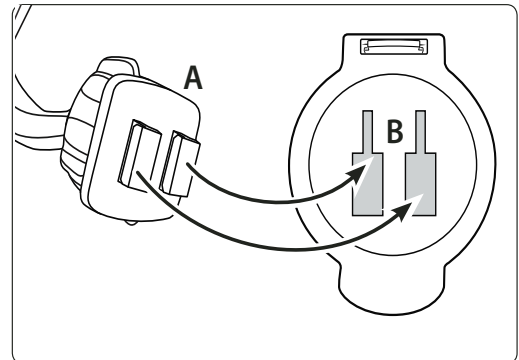
TomTom Device Installation - Pedestal Attachment

Step 1. Attach the device holder to the pedestal by inserting the dual T-Tabs of the pedestal into the T-slots of the TomTom adapter plate. Readjust angle knob if necessary.

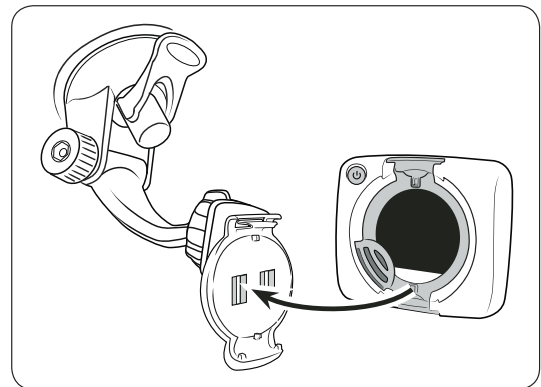


TomTom Start & Ease Device Installation - Pedestal Attachment

Step 1. Attach the TomTom dual-T adapter plate to the mount by inserting the dual-T tabs of the pedestal (A) into the dual T-slots on the adapter plate (B).



Step 2. While holding the mounted TomTom adapter plate, gently insert the TomTom device (not included, sold separately) into the adapter plate until an audible click is heard.



Safety Precautions

Do not install Arkon products over an air bag cover or within the air bag deployment zone. Arkon Resources, Inc. assumes no responsibility of liability for injury or death as a result of car crashes and/or air bag deployment.

Arkon is not responsible for any damages caused to your car, your device, or yourself due to the installation or use of this pedestal mount.



The Mobile Mounting Specialists™

Consumer Hotline:

USA (800) 841-0884

INT'L (626) 254-9005

Monday - Friday 9am - 5pm, PST

www.arkon.com

Arcadia, CA 91006 USA

Designed in USA | Made in China

© Copyright 2010 Arkon Resources, Inc.