

TT112 | Friction Dashboard Mount for TomTom® GPS

CM012 with GN014-SBH
Friction Dashboard Mount
with Pedestal



Package Contents:

- (1) CM012 - Weighted friction dashboard mount
- (1) GN014-SBH Travelmount® mini windshield suction pedestal
- (1) Optional adhesive safety hook (recommended but not required)
- (1) Alcohol cleaning pad
- (1) APTTO - Adapter plate for TomTom ONE™ Series
- (1) APTTOXL - Adapter plate for TomTom ONE XL / XL-S™ Series
- (1) APTGO520 - Adapter plate for TomTom GO™ Series
- (1) APTTEP - Adapter plate for TomTom EasyPort™ Series
- (1) APTTSE - Adapter plate for TomTom Start™ and Ease™

TomTom Device Compatibility:

TomTom ONE 125 125-SE (TomTom EasyPort Mount)
 TomTom ONE 130, ONE 130-S (TomTom EasyPort Mount)
 TomTom ONE 140, ONE 140-S (TomTom EasyPort Mount)
 TomTom XL 325, XL 325-S, XL 325-SE (TomTom EasyPort Mount)
 TomTom XL 330, XL 330-S (TomTom EasyPort Mount)
 TomTom XL 335 Series (TomTom EasyPort Mount)
 TomTom XL 340, XL 340-S, XL 340 LIVE Series (TomTom EasyPort Mount)
 TomTom XL 350 Series (TomTom EasyPort Mount)
 TomTom XXL 530-S, XXL 535-T, XXL 540-S/WTE, XXL 550 Series (TomTom EasyPort Mount)
 TomTom ONE (US Edition, US 3rd Edition)
 TomTom ONE XL (1st Edition) - TomTom ONE XL-S (1st Edition)
 TomTom ONE 22, ONE 22 Regional, ONE 22 Regional Traffic
 TomTom XL 22, XL 22 Regional (TomTom EasyPort Mount)
 TomTom ONE UK / EUROPE (NEW Edition aka 2nd Edition, 3rd Edition)
 TomTom GO 520 / 530 / 630 / 720 / 730 / 920 / 930
 TomTom Start and Ease

TomTom, ONE, GO, and EasyPort, Start and Ease are product names, trademarks, or registered trademarks of TomTom International NV. Arkon Resources, Inc. is not affiliated with TomTom International NV.

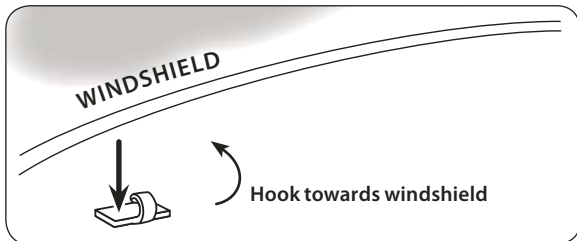
Do not place mount in or near an air bag deployment zone or where it will obstruct view of the road.

Dashboard Mount Installation

Step 1. Find a safe location on the vehicle dashboard that is not in an airbag deployment zone.

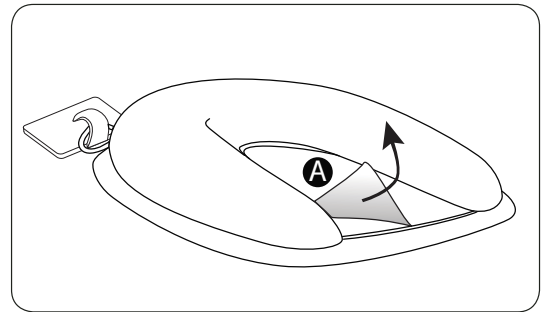


Step 2. **Optional Safety hook installation will add extra stability.** Clean the area with the included alcohol pad and let dry. Remove the adhesive backing on the safety hook base. The hook curve must point towards the windshield. Press and hold the hook down on the dashboard surface for about a minute. Allow 24 hrs. to cure to the dashboard surface at room temperature (72° F).

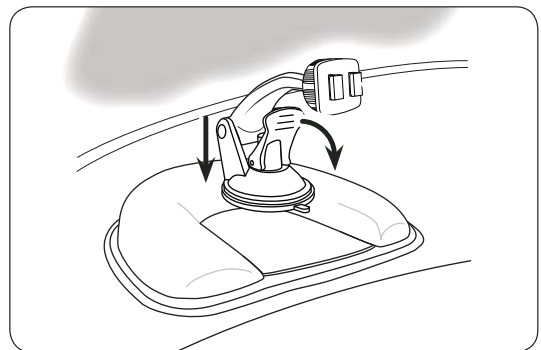


Continued on other side...

Step 3. Place the loop on the back of the dash mount around the safety hook and place on the dash in front of the hook. Remove the protective film from the pedestal mounting surface (A).



Step 4. Lower the pedestal onto the flat plastic surface of the dashboard mount and press down firmly. Flip the locking lever down to secure the pedestal to the dashboard mount.



Continued on other side...

Safety Precautions

Do not install Arkon products over an air bag cover or within the air bag deployment zone. Arkon Resources, Inc. assumes no responsibility of liability for injury or death as a result of car crashes and/or air bag deployment.

Arkon is not responsible for any damages caused to your car, your device, or yourself due to the installation or use of this pedestal mount.

ARKON
RESOURCES INC.

The Mobile Mounting Specialists™

Consumer Hotline:

USA (800) 841-0884

INT'L (626) 254-9005

Monday - Friday 9am - 5pm, PST

www.arkon.com

Arcadia, CA 91006 USA

Designed in USA | Made in China

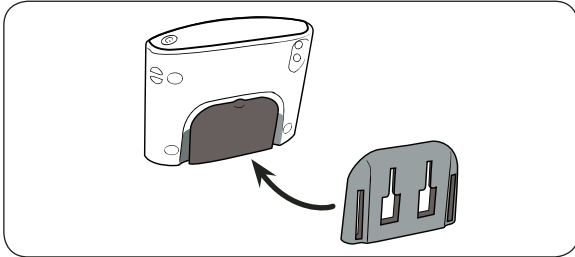
© Copyright 2010 Arkon Resources, Inc.

Dashboard Mount Installation - Continued

Step 5. Adjust the angle of the pedestal arm by tightening the rotation knob as needed.

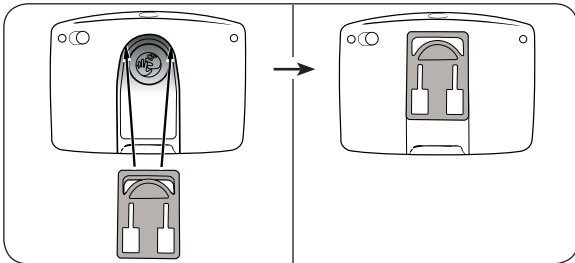
TomTom ONE, ONE XL, and ONE XL•S Plate Installation

Step 1. Slide the adapter plate up into the grooves on the back of the TomTom ONE, ONE XL, or ONE XL•S device.



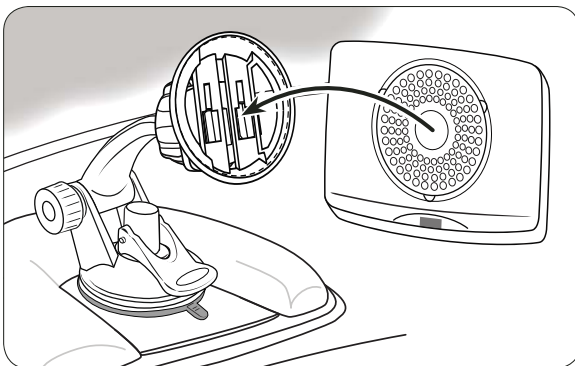
TomTom GO Series Plate Installation

Step 1. Attach the adapter plate by sliding it up into the slot on the back of the TomTom GO 520, 530, 630, 720, 730, 920, 920T, and 930 models as shown below.



TomTom EasyPort Device Insertion

Step 1. While holding the mounted adapter plate, gently insert the device (not included, sold separately) into the adapter plate until an audible click is heard. The device can then be rotated into the desired viewing angle.



Safety Precautions

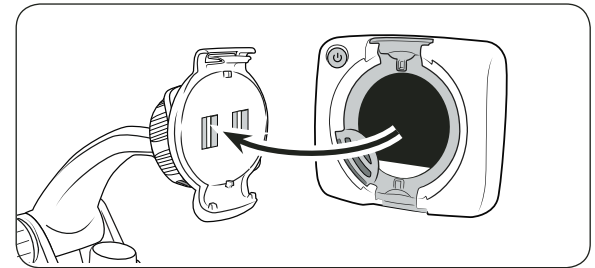
Do not install Arkon products over an air bag cover or within the air bag deployment zone. Arkon Resources, Inc. assumes no responsibility of liability for injury or death as a result of car crashes and/or air bag deployment.

Arkon is not responsible for any damages caused to your car, your device, or yourself due to the installation or use of this pedestal mount.

TomTom Start & Ease Device Installation - Pedestal Attachment

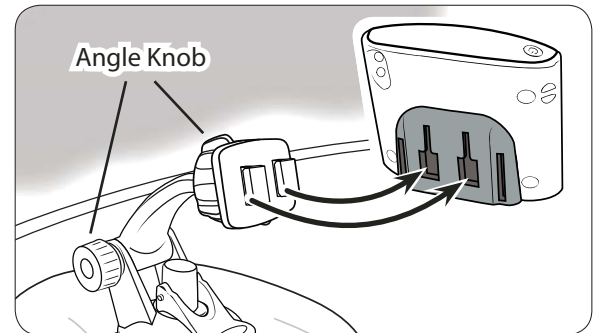
While holding the mounted TomTom adapter plate, gently insert the TomTom device (not included, sold separately) into the adapter plate until an audible click is heard.

Step 1.



TomTom Device Installation - Pedestal Attachment

Step 1. Attach the device holder to the pedestal by inserting the dual T-Tabs of the pedestal into the T-slots of the TomTom adapter plate. Readjust angle knob if necessary.



ARKON
RESOURCES INC.

The Mobile Mounting Specialists™

Consumer Hotline:

USA (800) 841-0884

INT'L (626) 254-9005

Monday - Friday 9am - 5pm, PST

www.arkon.com

Arcadia, CA 91006 USA

Designed in USA | Made in China

© Copyright 2010 Arkon Resources, Inc.