

MM315 | Travelmount® Windshield / Dash Mount for Magellan®, Mio®, & Navman®



Package Contents:

- (1) CM014-KST-2SH - Windshield suction or dash mount
- (1) APMM300 - Dual-T pattern adapter plate
- (1) AP036 - Adhesive circular disc with (1) Alcohol cleaning pad

Compatible with:

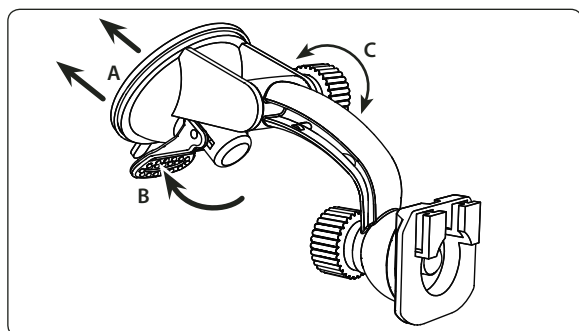
- Magellan Maestro: 3100, 3140, 3200, 3210, 3220, 3225, 3250, 4000, 4010, 4040, 4050, 4210, 4215, 4200, 4220, 4245, 4250, 4350, 4370, 4700, 5310, and 5340
- Magellan RoadMate: 1200, 1210, 1212, 1215, 1220, 1230, 1340, 1400, 1412, 1430, 1440, 1470, 1475T, 2000, 2200T, 2250T, 300, 3000T, 3050T, 360, 500, 500 Plus, 6000T, 700, 760, 800, and 860T
- Magellan Triton: 1500, 200, 2000, 300, 400, and 500
- Magellan Crossover: GPS 2500T
- Mio Moov: 300, 301, 310, 330, 330 Europe, 360, 370 Europe, 380, 500, and Knight Rider Ed.
- Navman: 550, 550 3D, 570, 590i



Do not place mount in or near an air bag deployment zone or where it will obstruct view of the road.

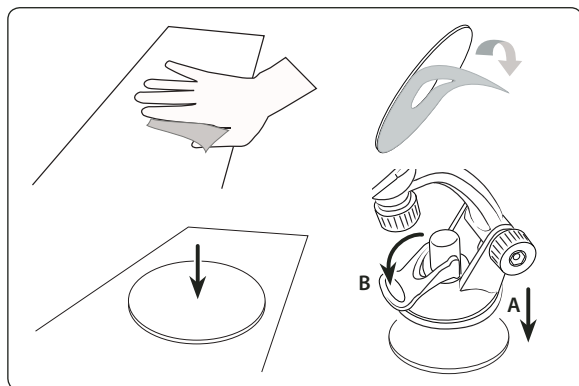
Windshield Mount Installation

- Step 1. Find a safe location on the interior of the vehicle's windshield to mount the pedestal. Firmly push the suction base (A) against the windshield and flip the base lever down (B) to the locked position. See diagram below.
- Step 2. Adjust the angle of the pedestal arm by tightening the angle adjustment knob (C) at the base to the desired angle.



Dash or Console Mounting (Optional)

- Step 1. Find a safe location on the dash or console. Use the included alcohol pad to clean the mounting surface if necessary. Remove the paper backing on the adhesive disc and firmly press in place.
- Step 2. Place the pedestal's suction base (A) over the center of the circular disc. While firmly holding the pedestal on top of the disc, flip the base lever down (B) to the locked position.



All brand names and product names are trademarks or registered trademarks of their respective owners.



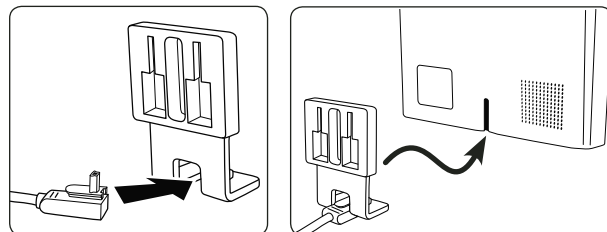
Safety Precautions

Do not install Arkon products over an air bag cover or within the air bag deployment zone. Arkon Resources, Inc. assumes no responsibility of liability for injury or death as a result of car crashes and/or air bag deployment.

Arkon is not responsible for any damages caused to your car, your device, or yourself due to the installation or use of this pedestal mount.

Connect Power Cord to Adapter Plate and Device Attachment

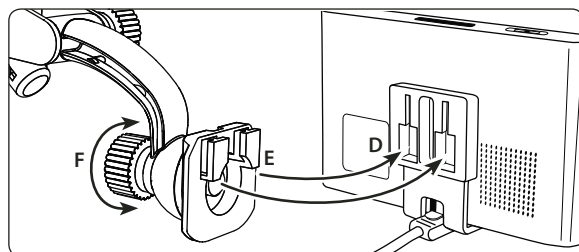
- Step 1. Insert the power cord (not included, sold separately) into the grooved slot in the bottom of the adapter plate.



- Step 2. Insert the adapter plate with power cord into the vertical groove pattern on the back of the GPS device (not included, sold separately.)

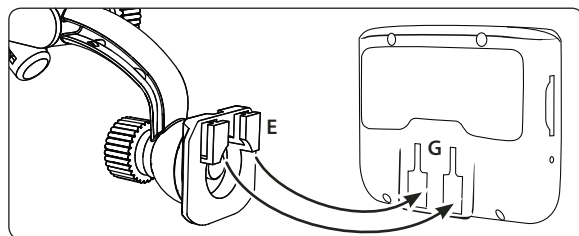
Connect GPS Device to Windshield / Dash Mount

- Step 1. Connect the dual T-slots (D) on adapter plate to the dual T-tabs (E) on the pedestal head. Adjust the angle and rotation of the head by tightening the head adjustment knob (F).



Dual-T Device Attachment

- Step 1. If your Magellan device has dual-T slots on the back, attach the GPS unit to the dash mount by connecting the dual T-slots (G) to the dual T-tabs of the mount head (E).



ARKON®
RESOURCES INC.

The Mobile Mounting Specialists™

Consumer Hotline:
USA (800) 841-0884
INT'L (626) 254-9005
Monday - Friday 9 am - 5 pm, PST

www.arkon.com
Arcadia, CA 91006 USA
Designed in USA | Made in China and Taiwan
© Copyright 2009 Arkon Resources, Inc.